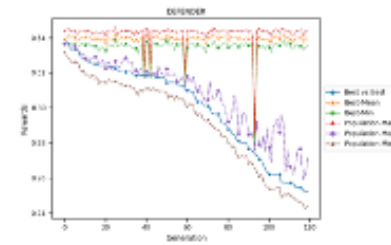


# Using Domain Knowledge in Coevolution and Reinforcement Learning to Simulate a Logistics Enterprise

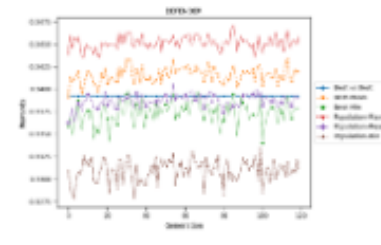
Ying Zhao, Naval Postgraduate School; Erik Hemberg MIT, CSAIL; Nate Derbinsky Northeastern University; Gabino Mata United States Marine Corps; Una-May O'Reilly MIT, CSAIL

## Operators:

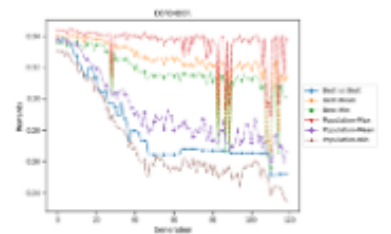
- Decision Flip mutation
- Decision Limited crossover
- Top historical solution initialization
- Fitness function
  - Decision association (Lift)
  - Number of decisions (Length)



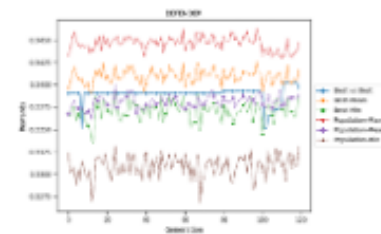
Baseline



Length penalty



Lift



Lift and Length

